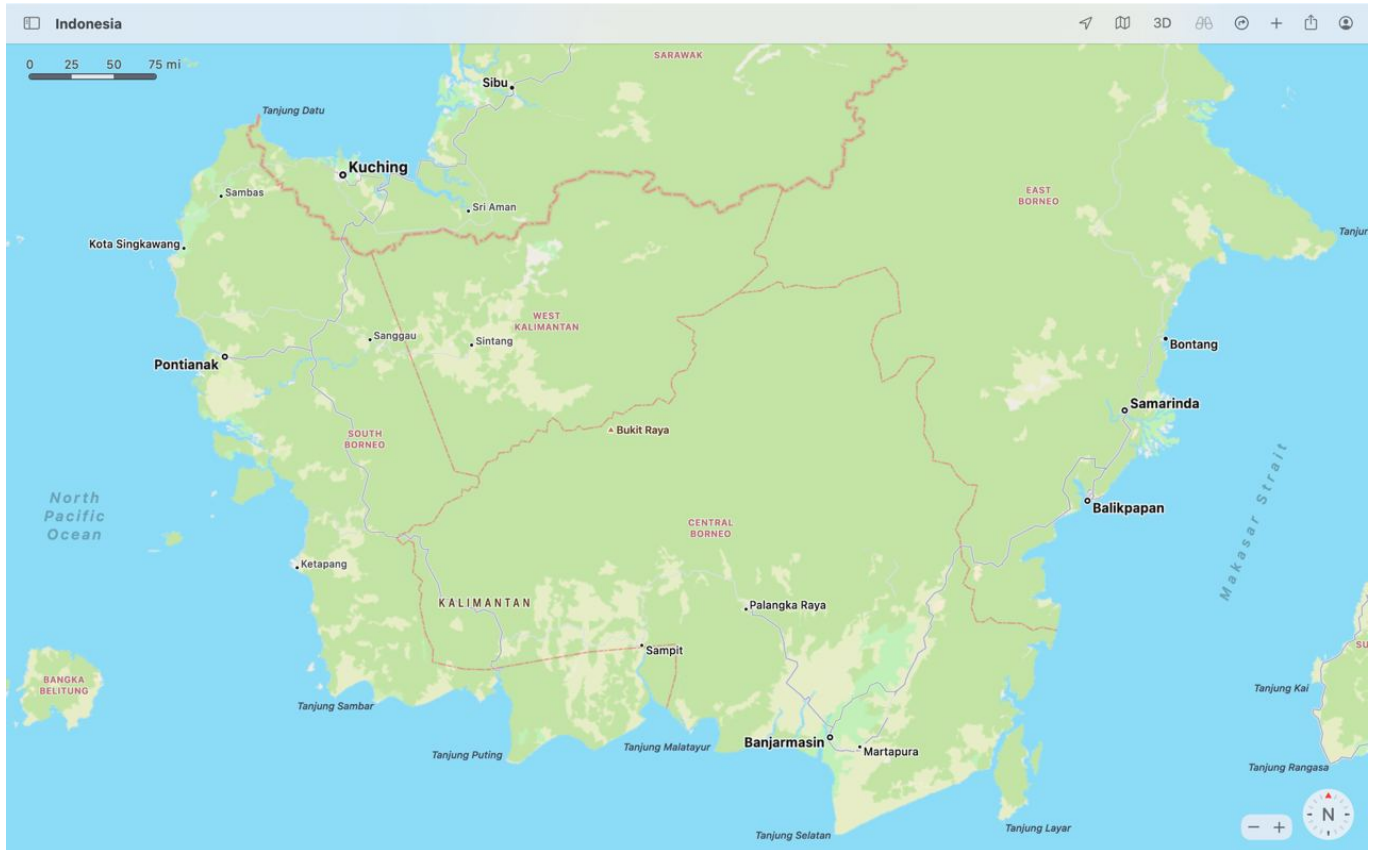


The #KalimantanGate in Apple Maps

reinhardt1010.id – 10 November 2021

From <https://reinhardt1010.id/blog/2021/11/10/apple-maps-kalimantangate>.

Scan the QR Code to view the article on your device or web browser.



Content may subject to copyright. Visit the original website to view copyright and licensing information about this content. QR Code is a registered trademark of DENSO WAVE, Inc. in Japan and other countries. Generated on 2024-11-10 12:56:26.

Sometimes, it feels quite embarrassing to find out that one of the Indonesia's largest islands is mapped in Apple Maps in a wrong way. This issue has happened for years, and I can even reproduce it today on the latest, shiny, **macOS Monterey**.

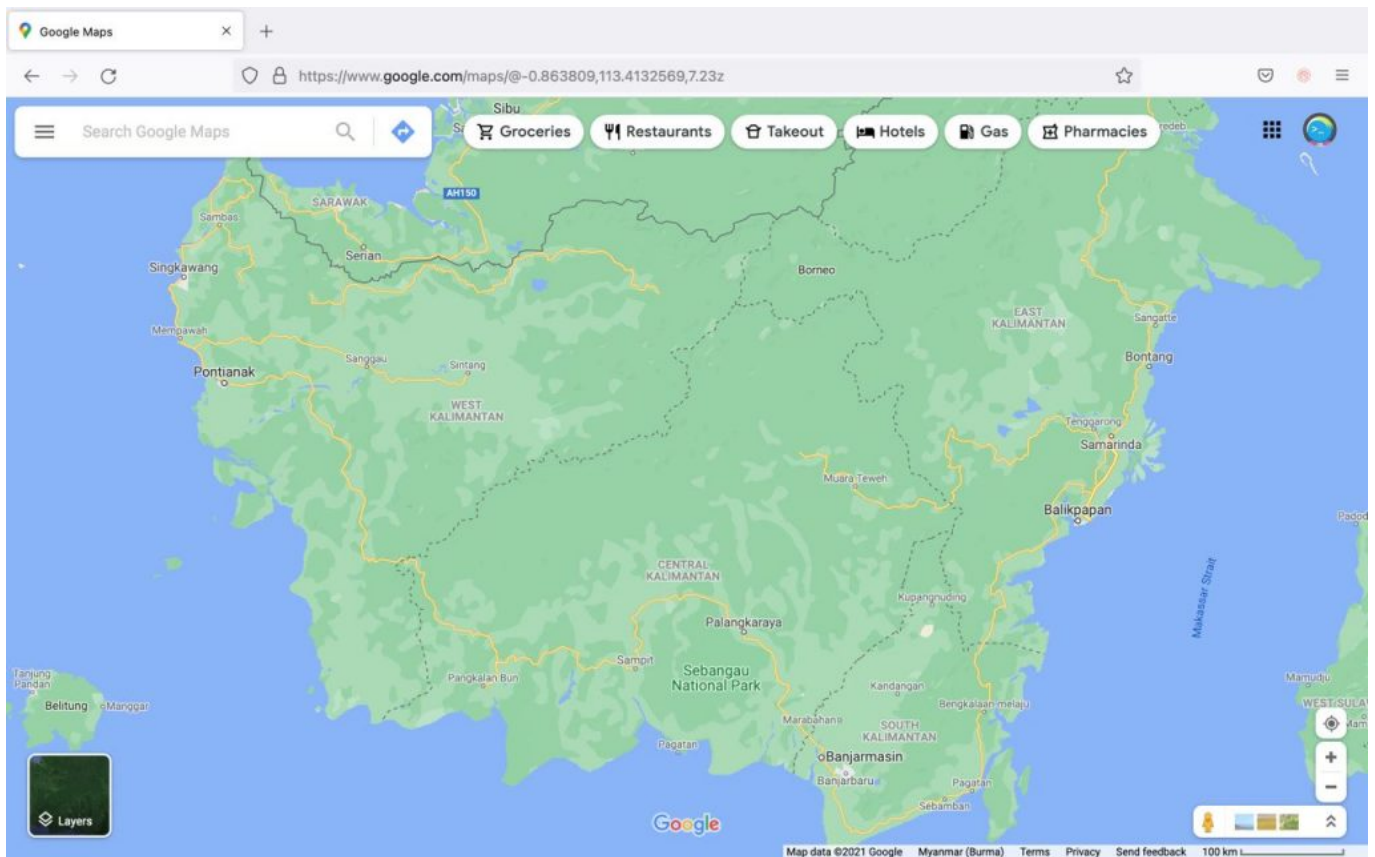
This island has two names. In Indonesia, it's called **Kalimantan**, while others refer to it as **Borneo**. This same island is inhabited by three countries, which are Brunei Darrusalam, Indonesia, and Malaysia.

And now, what's wrong with the map above? Is the province of **South Kalimantan** located on the west? **West Kalimantan** in the middle? **Central Kalimantan** seems to cover the southern parts of the island, too. Really? Has Apple forgotten the order of wind directions 'cause they removed them from the Safari icon?



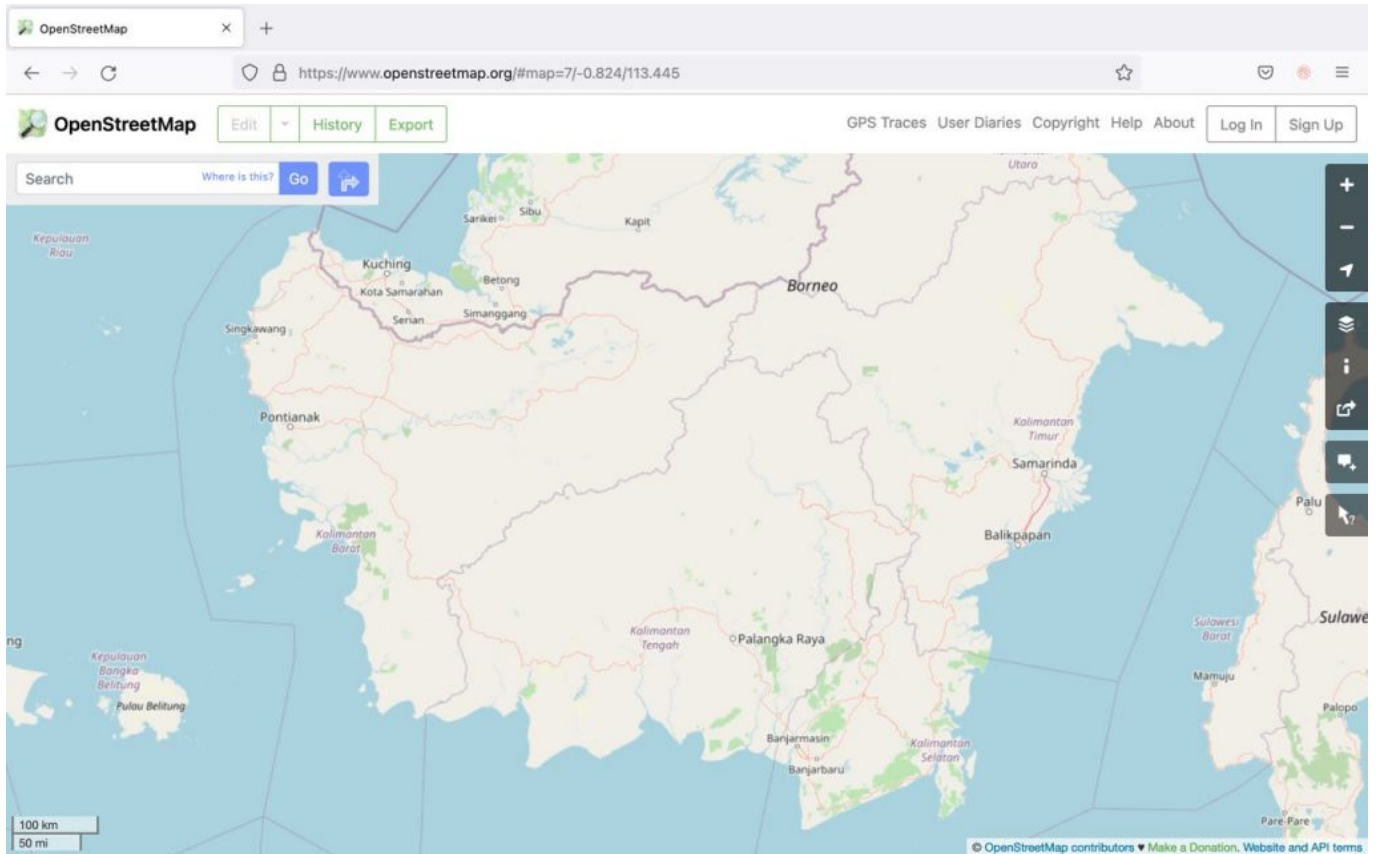
Safari icon over the years

The problem doesn't stop here. In fact, **the boundaries of the provinces are wrong, too!** Let's compare this with **Google Maps**, shall we?



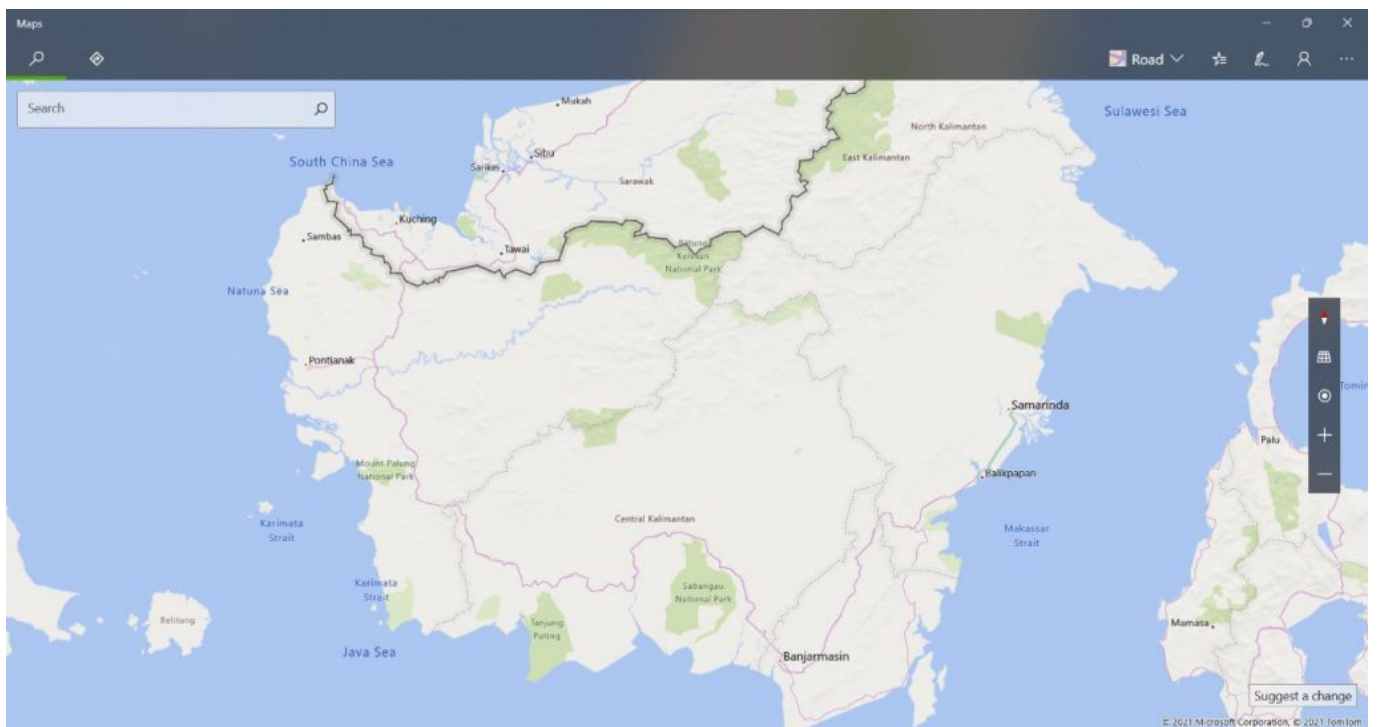
Kalimantan/Borneo island in Google Maps

And also, on **OpenStreetMap**:



Kalimantan/Borneo island in Google Maps

Even **Microsoft Windows** got that right, too!



It seems that both "West Kalimantan" and "South Borneo" in Apple Maps should be where the real **West Kalimantan** is located. Except for the bottom part, where for some reason the boundaries for "South Borneo" in Apple Maps extends to the parts of **Pangkalan Bun** and **Sampit**, where they're supposed to be located on the real province of **Central Kalimantan**.

This is also the reason why search results for "Banjarmasin" (the capital city of South Kalimantan) is

said to be on the Central, and "Pontianak" (the capital city of West Kalimantan) is said to be on the South, according to both Apple Maps, and sometimes DuckDuckGo, too!

20.30 ↗



◀ Search

🔍 banjarmasin



Cancel



Banjarmasin, Central Borneo, Indonesia

Recently Viewed



Syamsudin Noor International Airport

Jalan Akses Bandara Baru, Landasan Ulin, Banja...



Masjid Jami Banjarmasin

Banjarmasin, Central Borneo, Indonesia



Pelabuhan Trisakti Banjarmasin

Ferry · Jl. Barito Hilir, Kalimantan Selatan, Banjar...



Duta Mall Banjarmasin

Jalan Ahmad Yani Km. 2 No. 98,... · **Closing Soon**



Banjarmasin

106 km · Pandegelang, Banten, Indonesia



TreePark Hotel Banjarmasin

Banjarmasin, Central Borneo, Indonesia



Hotel 88 Banjarmasin

Banjarmasin, Central Borneo Indonesia



POP! Hotel Banjarmasin

Banjarmasin, Central Borneo Indonesia



Mercure Banjarmasin

Banjarmasin, Central Borneo Indonesia



Graha Kayu Tangi Gereja Bethany Banjarm...

Banjarmasin, Central Borneo, Indonesia


Q ponti ✕ Cancel


 **Pontianak, South Borneo, Indonesia**


Directions

 **Pontianak, South Borneo, Indonesia**
Recent Search · South Borneo

 **Pontianak**
Pontianak, South Borneo Indonesia


 **Pontianak Convention Center**
Pontianak, South Borneo, Indonesia


 **Pontianak Vapor Shop**
Jalan Putri Dara Nante & Jalan Wan Sagaf, Pontia...

 **Ponti Kreasi Utama**
Pontianak, West Borneo Indonesia

 **SMPN 1 Pontianak**
Pontianak, South Borneo Indonesia

 **Pontianak**
Recently Viewed · South Borneo

 **Hotel Borneo Pontianak**
Pontianak, South Borneo Indonesia

 **SMP Muhammadiyah 1 Pontianak**
Pontianak, South Borneo Indonesia

Apple's response so far...

Last April, Reinhart reached out to Apple Support via Twitter, and was met with a generic response:

<https://twitter.com/AppleSupport/status/137960862011904769?s=20>

But come on, seriously? Reporting a whole, gigantic mistake made on this giant island and all its places, from the single Maps app? **How many map reports it would take for Apple to fix this thing?**

And I believe this wouldn't be fixed if people aren't aware of this giant bug, just like that case of [Android burger emoji](#) four years ago. So, yeah...